



245 East 50th Street, Suite 4A
New York, NY 10022

Office (212) 421 6408
Fax (212) 371 3279
Email helpdesk@btnewyork.com
Web www.btnewyork.com

No Fee: Live less than 500ft to Central Park in a Large 550 SQFT Alcove Studio in Full Service Condominium

For Rent

Central Park Towers

392 Central Park West

3-G

Size: Alcove Studio - 1 Bath

Offered At \$2,300

Apartment Features:

Turn Central Park into your backyard. Residence 3-G is a sprawling Alcove Studio with spacious living area and sleeping area that can both provide privacy and entertainment space. This apartment has a wall of windows facing a bright and open northern exposure with views of green tree-line and landscaped grounds. The unit features hardwood floors throughout, a separate galley kitchen and abundance of storage including an entry walk-in closet and a separate dressing alcove. Sorry no pets.

Building Features:

392 CPW is a Full Service Luxury Condo w/24-hour Concierge, Elevator, Health Club, Laundry Rm, Bike Rm & Live in Super. Outside are landscaped grounds, courtyard & children's playground. Steps away is a Farmers Market on Fridays, Whole Foods, Starbucks, Sephora, T.J.Maxx, HomeGoods & much more! Easy access to bus & subway: 1, 2, 3, B & C.

For More Information Please Call:

JR Rivera

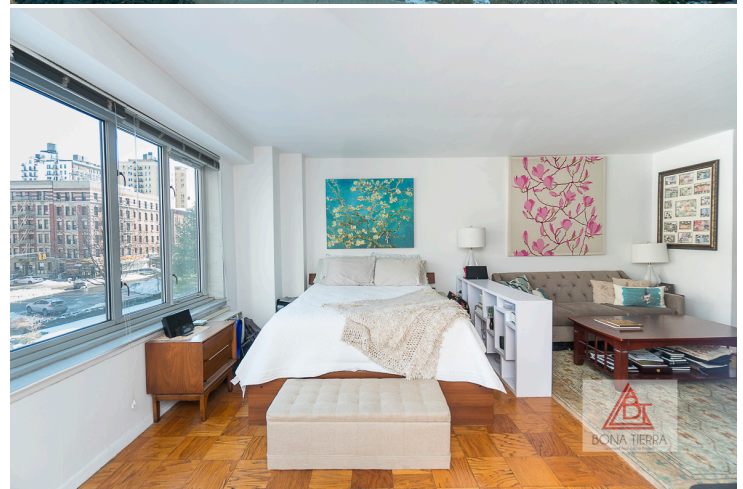
O:212-421-6408 & C:917-848-1623

Email:jr@btnewyork.com

Corazon Rivera

O:212-421-6408 & C:917-751-8851

Email:cora@btnewyork.com



Floor Plan

