



245 East 50th Street, Suite 4A
New York, NY 10022

Office (212) 421 6408
Fax (212) 371 3279
Email helpdesk@btnewyork.com
Web www.btnewyork.com

Fully Renovated One Bedroom with Private South Facing Balcony in Full Service Luxury Condominium

For Rent

World Wide Plaza

350 West 50th Street

3-E

Size: 1 Bedroom - 1 Bath

Offered At \$3,300

Apartment Features:

Residence 3-E is a fully renovated one bedroom, one bathroom at 575 sq ft. It features hardwood floors throughout and a private south facing balcony. A sunny southern exposure brightens the unit through the oversized windows. The open kitchen sports a granite counter top and is fully equipped with top-of-the-line stainless steel appliances. The master bedroom has ample closet space designed by California Closets, and the bathroom has a soaking tub. The unit is pet-friendly, and World Wide Plaza is wired for Verizon FIOS and allows pied-a-tier.

Building Features:

Worldwide Plaza is a full-service 467 unit luxury condo w/24-hour doorman, concierge, live-in super, rooftop deck, private garden, laundry rm, bike rm, public plaza & garage. It is centrally located in Midtown West & is 9th Ave restaurant row, Central Park, & Broadway Theaters. TMPL health club with membership fee is in the bldg with a 40,000 pool

For More Information Please Call:

JR Rivera

O:212-421-6408 & C:917-848-1623

Email: jr@btnewyork.com

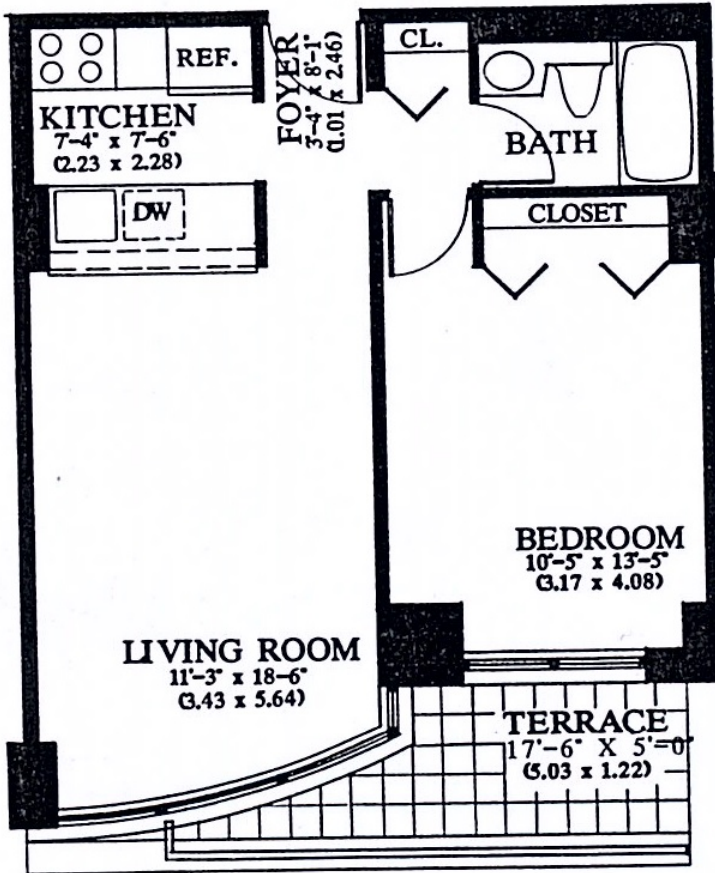
Corazon Rivera

O:212-421-6408 & C:917-751-8851

Email: cora@btnewyork.com



Floor Plan





245 East 50th Street, Suite 4A
New York, NY 10022

Office (212) 421 6408
Fax (212) 371 3279
Email helpdesk@btnewyork.com
Web www.btnewyork.com



Bona Tierra New York Corp is a licensed real estate broker in the state of New York and is for Equal Housing Opportunity. All material presented herein is intended for information purposes only. All information furnished regarding property for sale, rent or financing is from sources deemed reliable, but no warranty or representation is made as to the accuracy thereof and same is submitted subject to errors, omissions, change of price, rental or other condition, prior sale, lease or financing, or withdrawal without notice. All square footage are approximate unless otherwise indicated and information, including, but not limited to dimensions, photographs, room count, number of bedrooms and the school district in property listings are deemed reliable but should be verified by your own attorney, architect, or zoning expert. As a precondition to your accepting and sharing this listing you agree not to advertise it at anytime without prior written permission.