



245 East 50th Street, Suite 4A
New York, NY 10022

Office (212) 421 6408
Fax (212) 371 3279
Email helpdesk@btnewyork.com
Web www.btnewyork.com

No Fee! Modern Oversized Alcove Studio in Luxury Condominium with Views of Rockefeller Center!

For Rent

Centria

18 West 48th Street

4-A

Size: Alcove Studio - 1 Bath

Offered At \$2,800

Apartment Features:

Space is no object in this oversized 632 sqft alcove studio apartment with floor-to-ceiling windows & inspiring views of Rockefeller Center. Ten-foot ceilings make this spacious residence feel even more expansive, along w/ the clever Italian Driade stainless steel kitchen & sliding doors that camouflage the area when not in use. Two generously sized closets located right by the washer/dryer can accommodate the most grandiose of wardrobes. Best feature is the luxurious white marble bathroom with a handsome double sink vanity, deep soaking tub & separate glass-encased shower stall. A sophisticated property ideal for Fifth Avenue living!

Building Features:

The Centria is a white glove condo at 35 stories with 152 units built in 2005. Amenities include 24-hour concierge, private residents Lounge facing Rockefeller, Business Center, private dining room & Fitness Center. Centria is steps to Rockefeller Center, World Renowned Fifth Avenue Shopping & Dinning, St. Patrick's Cathedral & Sak's Fifth Avenue

For More Information Please Call:

Corazon Rivera

O:212-421-6408 & C:917-751-8851

Email: cora@btnewyork.com

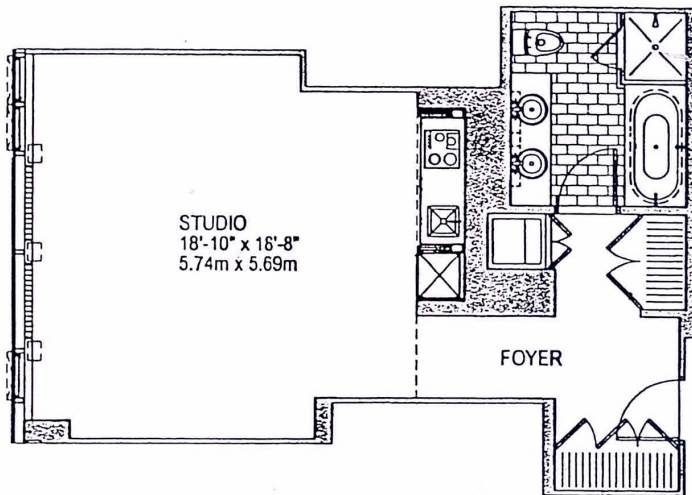
JR Rivera

O:212-421-6408 & C:917-848-1623

Email: jr@btnewyork.com



Floor Plan





245 East 50th Street, Suite 4A
New York, NY 10022

Office (212) 421 6408
Fax (212) 371 3279
Email helpdesk@btnewyork.com
Web www.btnewyork.com



Bona Tierra New York Corp is a licensed real estate broker in the state of New York and is for Equal Housing Opportunity. All material presented herein is intended for information purposes only. All information furnished regarding property for sale, rent or financing is from sources deemed reliable, but no warranty or representation is made as to the accuracy thereof and same is submitted subject to errors, omissions, change of price, rental or other condition, prior sale, lease or financing, or withdrawal without notice. All square footage are approximate unless otherwise indicated and information, including, but not limited to dimensions, photographs, room count, number of bedrooms and the school district in property listings are deemed reliable but should be verified by your own attorney, architect, or zoning expert. As a precondition to your accepting and sharing this listing you agree not to advertise it at anytime without prior written permission.